



Elevation B

3 - 4 Bedrooms | 2.5 - 3.5 Bathrooms | 2,058 - 2,480 Sq. Feet

# THE PARKER



Elevation A



Elevation B



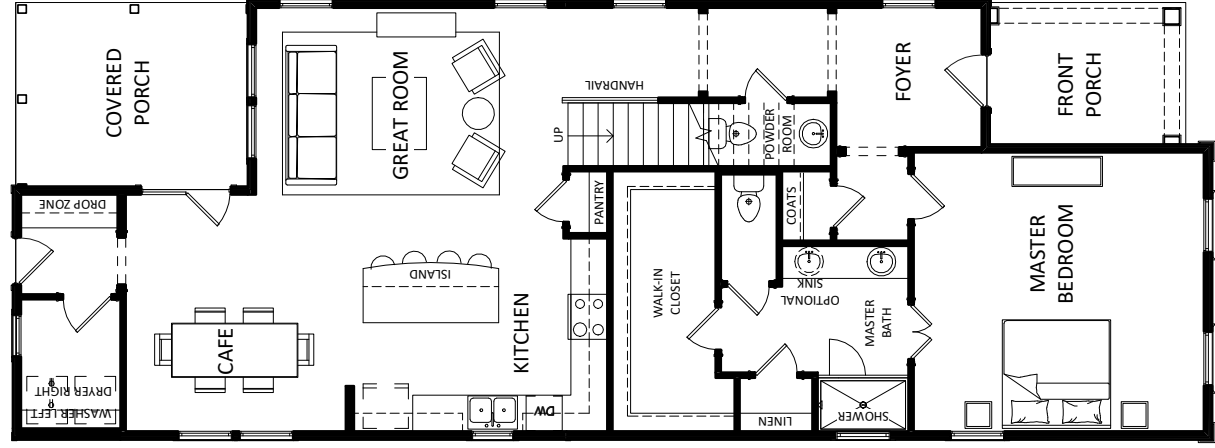
Elevation C

Updated May 2017.

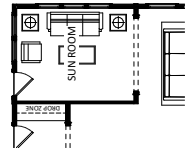


# THE PARKER

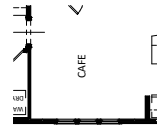
3 - 4 Bedrooms | 2.5 - 3.5 Bathrooms | 2,058 - 2,480 Sq. Feet



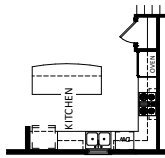
FIRST FLOOR



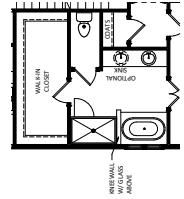
Optional Sun Room



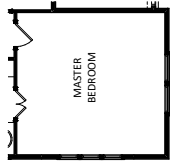
Optional Cafe Clerestory



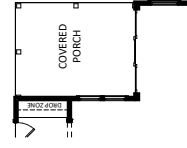
Optional Chef's Kitchen



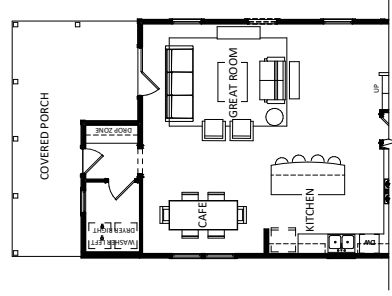
Optional Master Bath



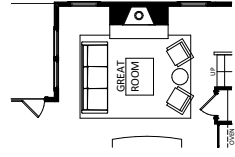
Optional Master Clerestory



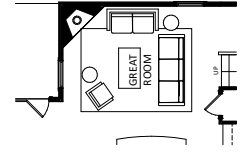
Optional 9' Slider



Optional Porch Extension



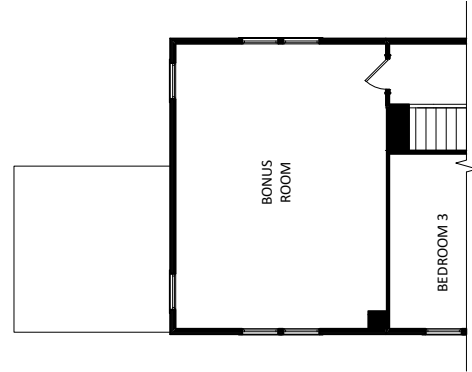
Optional Fireplace



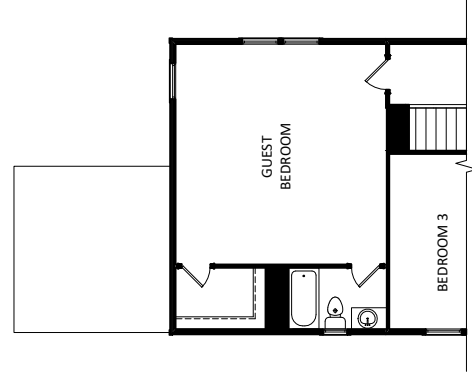
Optional Corner Fireplace



SECOND FLOOR



Optional 2nd Floor Bonus Room (422 sq. ft.)



Optional 2nd Floor Guest Suite (422 sq. ft.)



Disclaimer for floor plans - Information is subject to change without notice. Information contained herein believed to be accurate but not warranted. The drawings/dimensions shown are for illustrative purposes only and may not be accurate representations of final construction. Always refer to actual blueprint in sales office for the most accurate representation of all construction details.