



3 - 4 Bedrooms | 2.5 - 3.5 Bathrooms | 2,399 - 3,159 Sq. Feet

Elevation D Craftsman

THE FAIRFIELD



Elevation A Traditional



Elevation B Picturesque



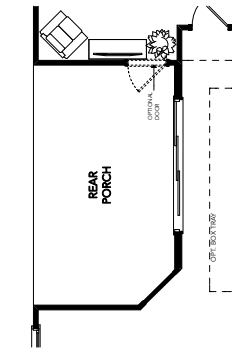
Elevation C English Cottage



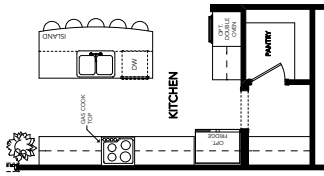
Elevation D Craftsman

THE FAIRFIELD

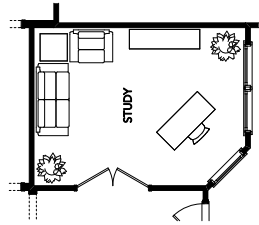
3 - 4 Bedrooms | 2.5 - 3.5 Bathrooms | 2,399 - 3,159 Sq. Feet



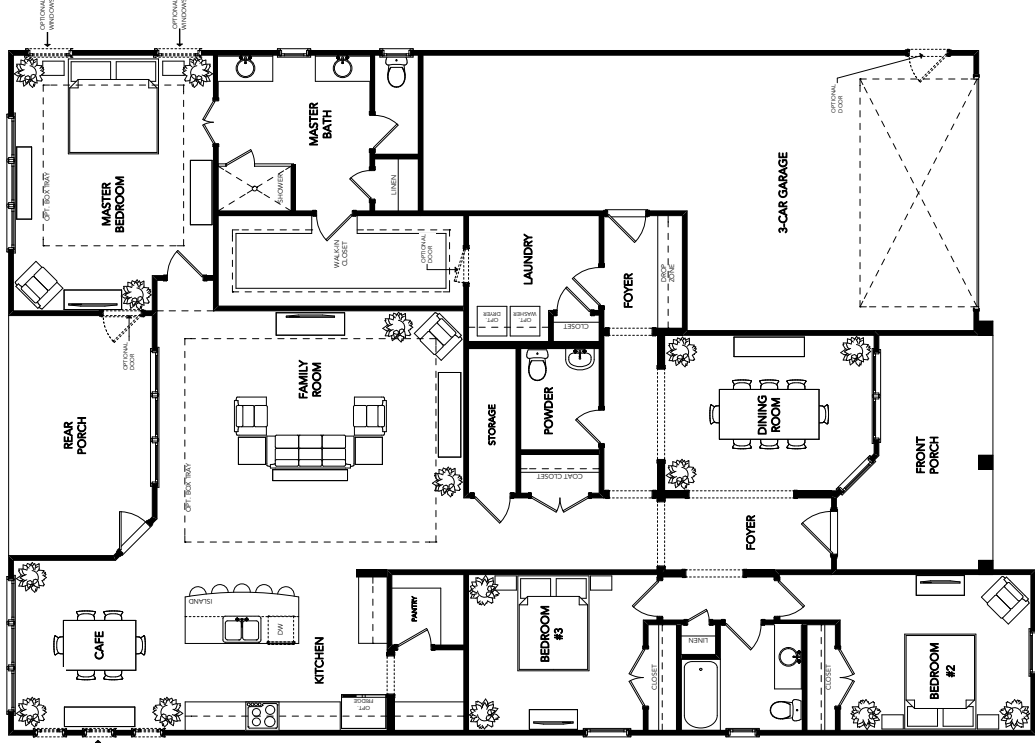
Optional Sliding Glass Door



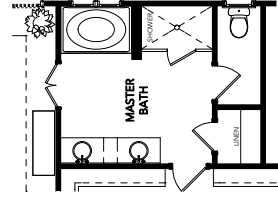
Optional Chef's Kitchen



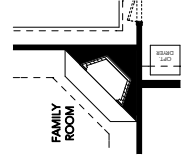
Optional Study



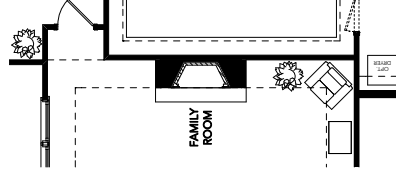
MAIN FLOOR



Optional Master Bath

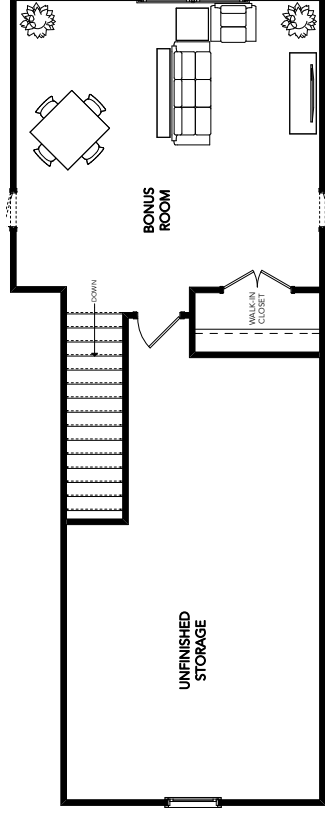


Optional Fireplace #1

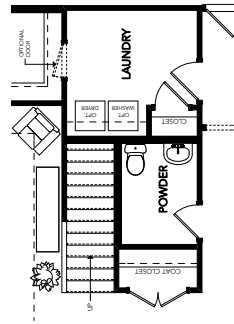


Optional Fireplace #2

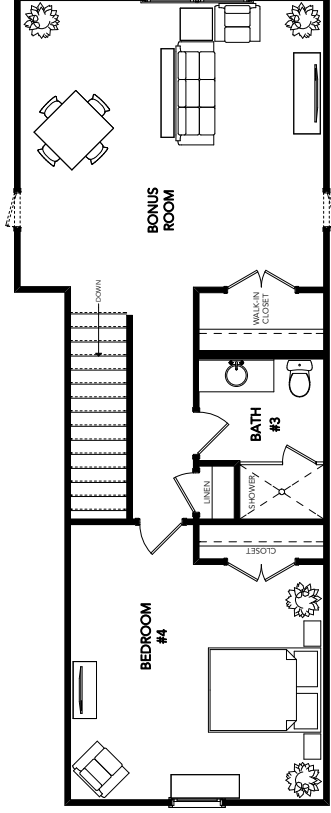
FIRST FLOOR



OPTIONAL BONUS ROOM (+760 sq. ft.)



Optional Upstairs from 1st Floor



OPTIONAL BONUS ROOM w/ 4th BEDROOM (+371 sq. ft.)

SECOND FLOOR



Disclaimer for floor plans - Information is subject to change without notice. Information contained herein believed to be accurate but not warranted. The drawings/dimensions shown are for illustrative purposes only and may not be accurate representations of final construction. Always refer to actual blueprint in sales office for the most accurate representation of all construction details.